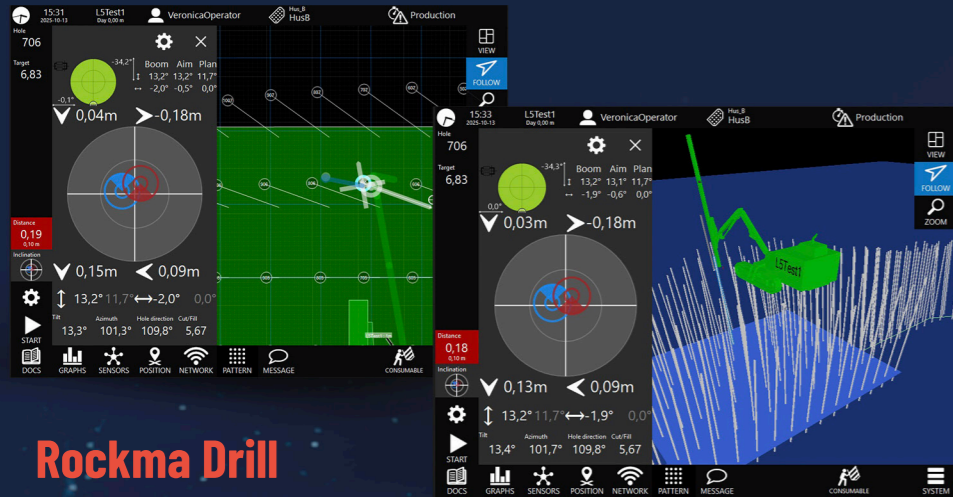


# ROCKMA CONSTRUCTION



**ROCKMA**  
Know your ground

**LS NAVIGATION**  
POSITIONING AT WORK



## Rockma Drill

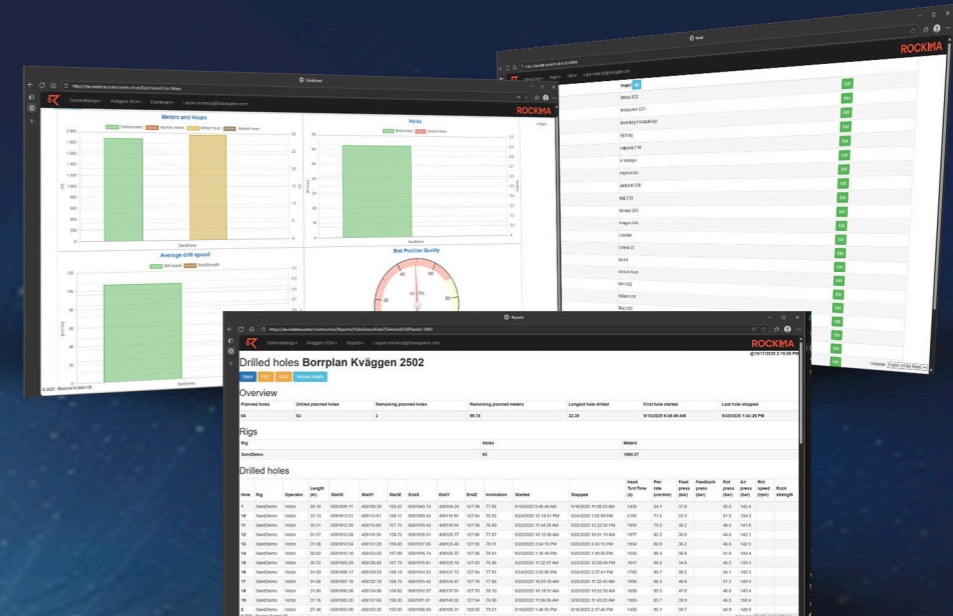
Work in 2D, 3D or profile view

All tools and settings you need only two clicks away

Planned drilling or unplanned drilling by length, elevation and/or surface.

## Rockma Cloud

- Charts and graphs
- Reports in CSV or PDF
- Ad design files to your projects



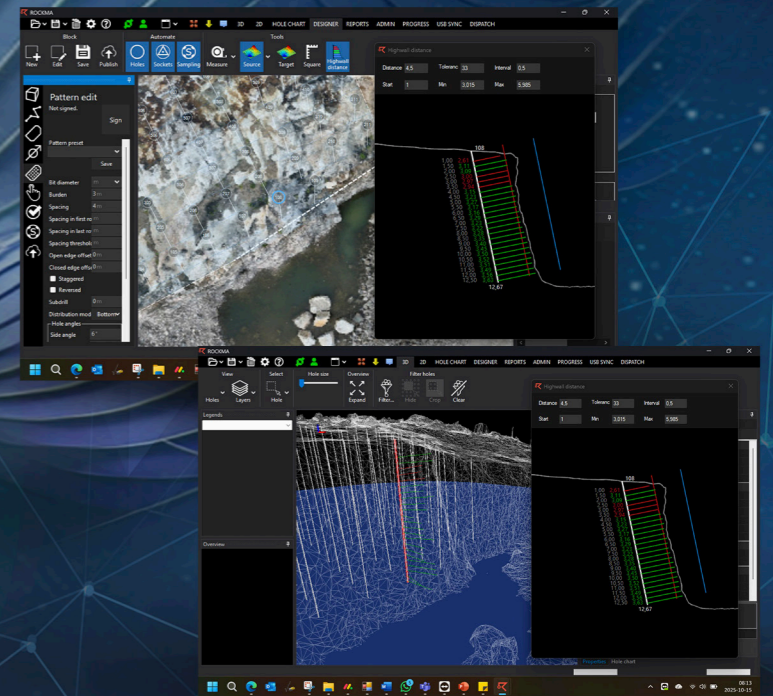
Seamless integration of data in real time between machines, office & cloud. Follow production in realtime from office.

## Rockma Office

Design drillpattern between scanned data and complicated 3D surface. Get control of high wall distance



Interfacin Epiroc, Sandvik, Stonepower, Agder, Montaber or complete package of sensors. Auto logging, start/stop and align.



# ROCKMA

**L5 NAVIGATION**  
POSITIONING AT WORK

## Rockma applications

- Office
- Drill
- Survey
- Excavator

### Rockma Office

- Complete fleet management
  - 2D and 3D view for machines, plans and holes with rock properties
  - Feature rich plan designer for drilling and excavating
  - Rules for sensor data validation
  - Drill quality evaluation
  - Group and individual machine messaging
  - Import/export Iredes planned & drilled holes
  - Import design files (LandXML, dwg, dxf, obj)
  - Manage high wall distance
  - Rock properties
  - Option for Rockmas unique interpretation of rock properties from sensor data
  - Option for Rockmas unique interpretation of rock properties
- Rock strength and Fracture information from sensor data.

### Rockma Excavator & Rockma Survey

- 2D and 3D view
- Collecting log points
- Messaging with Rockma Office users
- Pattern designer

### Rockma Drill

- Complete drill monitoring (MWD)
  - Option for Rockmas unique interpretation of rock properties
  - Rock strength and Fracture information from sensor data.
  - Planned drilling (unlimited nr of holes/drillplans)
  - Unplanned drilling (by length, elevation and/or surface)
  - Interfacing Epiroc, Sandvik, Stonepower, Agder, Montabert, etc Auto logging, start/stop and align or complete package of sensors
- Auto logging, start/stop 3D view showing machine, planned holes, drilled holes (with length quality) and topographies.

#### Aiming view

- Guiding operator to correct start position and angle
- Showing offsets and angles from planned & drill hole

#### Pattern designer

- Graphical feedback from each design step
- Options for staggered/rows/cols/subdrill/size/offset, etc
- Usage of design files (lines, surfaces) and much more

#### Messaging

- Messaging with Rockma Office users
- Gauges & graphs
- Graphs for all available sensors while drilling
- Gauges in real time
- Strata view for rock properties while drilling

---

ROCKMA System AB    Phone: +46 (0)910-834 40  
Expolaris Center    Email: [contact@rockma.com](mailto:contact@rockma.com)  
SE-931 78 Skellefteå    Web: [rockma.com](http://rockma.com)  
SWEDEN

L5 Navigation Systems AB    Phone: +46 (0)10-457 77 90  
Handelsvägen 17A    Email: [info@l5navigation.com](mailto:info@l5navigation.com)  
SE-973 45 Luleå    Web: [l5navigation.com](http://l5navigation.com)  
SWEDEN