

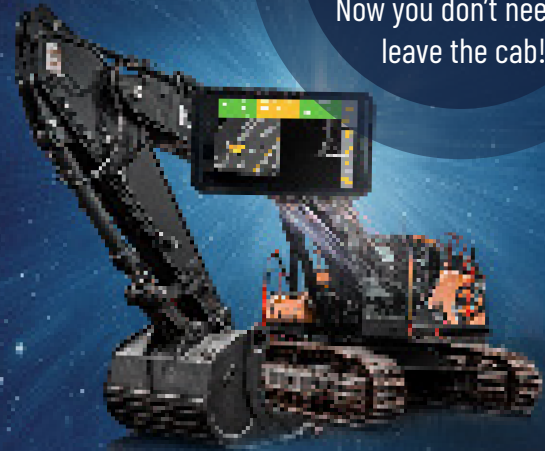
L5 U3D-X

The most seamless bucket calibration on the market. Now you don't need to leave the cab!

A machine control system developed from the ground up by people with a deep understanding of the application and extensive experience in the industry.

The main goal has always been to make the work easier for the machine operator.

With close to 1000 systems sold it's a well-proven and appreciated solution.



KEY FEATURES

- ✔ Modern software interface
- ✔ Two file formats (XML and DXF) for easy model management both for machine operators and surveyors
- ✔ Choose between an 8" or 10" screen
- ✔ Licenses for GPS, GLONASS, GALILEO, and BEIDOU are always included
- ✔ Extremely fast and stable sensors
- ✔ Everything is connected through the cloud service Unicontrol Cloud, where the machine owner or contractor can easily manage their machines and send measurement files and reference models between the field and the office
- ✔ Remote support is just a button press away



L5 Navigation Systems AB is a company that develops and resells positioning solutions for the geodesy, contracting and mining industries. L5 combines the best and most affordable solutions on the market to create maximum customer benefit at the right price. Since 2023, Geofix and Rockma System are part of L5 Navigation.

L5 U3D-X



See prices and read more about our products here



SPECIFICATIONS

TABLET 10"

Processor:	2,4 GHz, 1,8 GHz Octa-core
Screen:	10,1", 1920 x 1200
Camera:	13 Megapixel (back), 8 Megapixel (front)
Memory:	RAM 6 GB, Internal 128 GB, MicroSD (Up to 1 TB)
Network/mobile network:	2G GSM, 3G UMTS, 4G FDD LTE, 4G TDD LTE, 5G FDD SUB6, 5G TDD SUB6
Connections:	USB 3.2 Gen 1, 3,5 mm stereo
Wi-Fi:	802.11 a/b/g/n/ac/ax 2.4G+5GHz, HE80, MIMO, 1024-QAM
Bluetooth:	Bluetooth™ v5.2, NFC
Operation system:	Android™
Dimensions:	170,2 x 242,9 x 10,2 mm
Weight:	674 g
Battery:	Capacity 7600 mAh, operating time up to 16 hours without dock
Dust/water resistance:	IP68

TABLET 8"

Processor:	2,4 GHz, 2,0 GHz Octa-core
Screen:	8", 1920 x 1200
Camera:	13 Megapixel (back), 5 Megapixel (front)
Memory:	RAM 6 GB, Internal 128 GB, MicroSD (Upp till 1 TB)
Network/mobile network:	2G GSM, 3G UMTS, 4G FDD LTE, 4G TDD LTE, 5G FDD SUB6, 5G TDD SUB6
Connections:	USB 2.0, 3,5 mm stereo
Wi-Fi:	802.11 a/b/g/n/ac/ax 2.4G+5GHz, HE80, MIMO, 1024-QAM
Bluetooth:	Bluetooth v5.3, NFC
Operation system:	Android
Dimensions:	126,8 x 213,8 x 10,1 mm
Weight:	433 g
Battery:	Capacity 5050 mAh, operating time up to 14 tim without dock
Dust/water resistance:	IP68

GNSS RECEIVER

Channels:	544
Satellite systems:	GPS, GLONASS, GALILEO, BEIDOU, SBAS, QZSS, NavIC
Ports:	2x M12 (PWR+SER1 / ETH) 2x TNC (GNSSx2)
Dimensions:	120 x 100 x 43 mm
Weight:	0,65 kg
Voltage:	DC 10-30V
Operating temperature:	-40 to +85 °C
Dust/water resistance:	IP65

SENSORS

Main characteristics:	Magnetically immune pitch & roll High accuracy in movement High accuracy regardless of temperature 0.1° static accuracy 0.5° RMS dynamic accuracy 0.01 resolution (noise)
Technical characteristics:	IP68 / 69K 9 - 36 V CAN bus, J1939, CAN Open, RS232, RS485, 0 - 10V, 4 - 20 mA Can handle 1000 g 1/2 sin 0.1 ms, 3x all axes EMI, ESD, RFI protected & certified



L5 Navigation Systems AB is a company that develops and resells positioning solutions for the geodesy, contracting and mining industries. L5 combines the best and most affordable solutions on the market to create maximum customer benefit at the right price. Since 2023, Geofix and Rockma System are part of L5 Navigation.